



Kaba c-lever compact

More than just a door handle

Innovation and high-quality design in one: The Kaba c-lever compact is the first electronic door fitting solution which replaces a mechanical lever handle and is completely independent from the cylinder. In no time your mechanical door handle becomes a flexible electronic door solution with the option of assigning access rights temporarily or permanently, and blocking them if a key is lost.

The c-lever compact is part of the Kaba evolvo product family. This product line has won design prizes, and is operated using RFID media. Thanks to the standalone operation, no cables need to be installed - an easy installation with just two screws. Previously this was only possible for mechanical door handle sets.

A large number of beneficial applications are conceivable: doors can easily be equipped with this electronic access control, while the existing locking system can still be used independently, for example for mechanical emergency opening.

Areas of application

In principle, the Kaba c-lever compact is suitable for most inside or outside doors that are protected against weather. Almost any room can be organised using this electronic solution.

For example, access rights are given to different user groups or individual persons for different rooms on different dates and at varying times, permanently or temporarily.

Possible areas of use

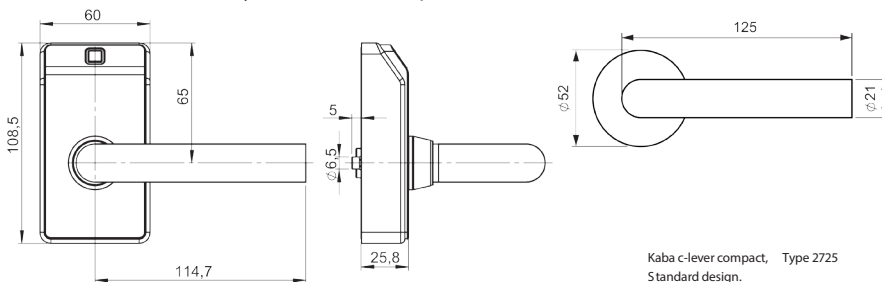
- > office buildings
- > meeting rooms
- > general infrastructure areas that need protection (e.g. server rooms, material rooms, storage rooms etc.)
- > classrooms / lecture theatres
- > guest rooms in smaller hotels or guest houses

Advantages at a glance

- > **Practical and quick**
existing mechanical doors can be refitted in just a few minutes
- > **Autonomous**
independent of locking cylinder and lock type, parallel operation to the existing locking system is possible
- > **Innovative design**
modern, consistent design and part of the award-winning Kaba evolvo product range
- > **Cost-conscious**
minimal maintenance costs due to standard AAA batteries
- > **Supports NFC**
ready for use with devices with NFC capability
- > **Investment protection**
system allows future function expansions as well as the integration into existing Kaba locking systems

Performance characteristics

- > **Intuitive user guidance:** The RFID access medium is held in front of the reading unit. An acoustic signal and light (green/red) indicates if access has been granted or denied. The room can be entered by normally pushing the door handle.
- > **Easy planning:** This solution, which is independent from locks and cylinders, is ideally suited to upgrade a mechanical locking system: a simple replacement of the mechanical door handle converts an existing locking system into an electronic access control solution.
- > **Easy assembly:** Installation can be carried out on doors made of wood, glass or metal. Ideally, interior or outside areas protected against weather. In most cases, the existing boreholes on the door can be used so that that installation is performed in just a few minutes.
- > **Scalable area of use:** The Kaba c-lever compact is suitable both for the individual door and as an element of a large locking system. Kaba offers various programming options depending on the size and requirements:
 - > manual programming with the master card on site for a few doors
 - > programming using the Kaba evolvo Manager Software (K EM) and the programming device for small and medium-sized systems
 - > programming using the Kaba exos 9300 Software for large and complex locking systems with online capability.
- > **Integrated Kaba CardLink concept:** Current authorisations are saved for specific rooms and times on the access media using Kaba CardLink. Lost access media automatically expire.
- > **CheckIn operation:** The Kaba evolvo Manager Software offers the option for a special " CheckIn operation" which manages access for small hotels and guest houses. Access cards are individually programmed when guests arrive, using the desktop reader which is connected to the computer via USB.
- > **Important Kaba evolvo features:**
 - > integrated Kaba security concept, e.g. ARIOS
 - > an unlimited number of media can be managed
 - > event memory for up to 2,000 door movements (can be switched off)
 - > 15 configurable time profiles, each with 12 time windows
 - > 20 holiday periods and 64 special days
 - > time-limited granting of user rights (validation)
- > **A comprehensive portfolio:** The Kaba product range includes other products in the same premium design and can be combined seamlessly. Depending on the customer's requirements, they can be integrated into any Kaba standalone or online system. For example, the Kaba digital cylinder, the Kaba c-lever compact, the terminals and the entire Kaba reader family are notable examples.



Versions

Supported RFID standards

- > LEGIC (advant & prime)
- > MIFARE (DESFire & Classic)

Designs

- > Standard, Half, Dual

Options

- > cover in black or white
- > choice of lever handle designs (see Kaba evolvo catalogue)

Technical data

Dimensions (W x H x D)

- > 108 x 60 x 25 mm
- > min. backset 45 mm, independent of door and lock

Power supply

- > 2 x 1.5V, AAA batteries

Environment / service life

- > temperature: -25 ° C to +70 ° C
- > protection class: IP54
- > humidity: 0 to 95 %, non-condensing
- > battery service life at 20 ° C: up to 90,000 cycles or up to 3 years

Certificates

- > Building hardware: EN 1906 class 3
- > Fire safety: DIN 18273 (tested as per EN 1634-1)
- > Emergency exit: EN 179 (in combination with corresponding door handles and locks)

Further details and order information can be found in the relevant Kaba evolvo catalogue or system description



Certified Management System,
ISO 9001,
Reg. No. 14572

