

# BARRIER FREE ACCESS

TO

# TOILETS & BABY CARE ROOMS





for Commercial, Institutional and Residential projects in Hong Kong and Macau.

We are offering a wide portfolio of Products & Solutions including Automatic Doors, Windows & Entrance, Hardware & Interior Doors, Security Gates, Access Control and Industrial Doors.

Service is our Value - we provide Technical Advice & Customized Drawings, Ironmongery Schedules, Master Key Plans, Supply & Installation, Contracting, Training and Service & Maintenance programs and Sourcing.

Key partners and suppliers include GILGEN Door Systems, dormakaba Security Solutions, EFAFLEX High-Speed Doors, HART Security Shutters, ABUS Security Tech Germany, TBS Biometric Solutions and AIR-LUX Window Systems.

Our experienced team with its in-depth market knowledge, product know-how and business experience is driving AUB Ltd to become a leading brand in the Industry.

## Barrier Free Access Freeing-up The Way-Automatically

“Barrier-free access is the key to ensuring that disabled individuals and persons of limited mobility enjoy self-sufficiency and participate in the normal life of society. The creation of a barrier-free environment has become a core mission in government, political and business circles alike.”

Buildings and other infrastructure, means of transport, items of technical equipment, IT systems, sources of audiovisual information, communications devices and other factors of day-to-day life are regarded as “barrier-free” if disabled persons can use them in a normal way without special difficulty and, generally, without any outside help.

Barrier-free construction and living is increasingly significant to, and being accepted more and more by, society as a whole. Indeed, barrier-free construction has become an integral part of forward-looking planning and design.

AUB is one of the key supplier of the Door–Automation for **HKIA**, **MTRC** and several other major public institutional facilities. The **Hong Kong Building Department** encourages this approach to barrier-free thinking and we were a key contributor to the new design manual of **Barrier Free Access 2008**, also with amendments at **2015, 2017 & 2019**.

Barrier-free construction is not just designed to benefit disabled persons and the elderly, but also those experiencing temporary difficulties, such as parents trying to deal with small children and prams, persons handling large items of shopping, or people having to walk crutches, etc.

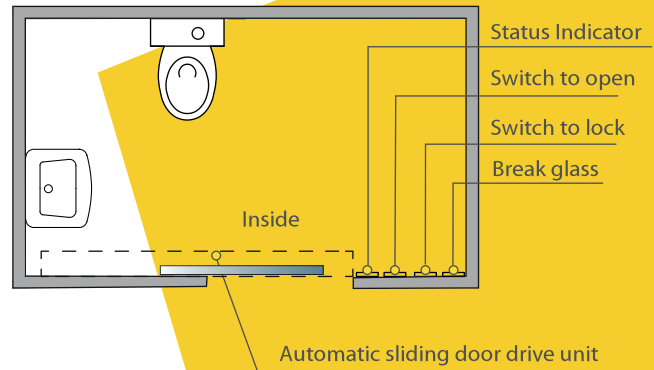
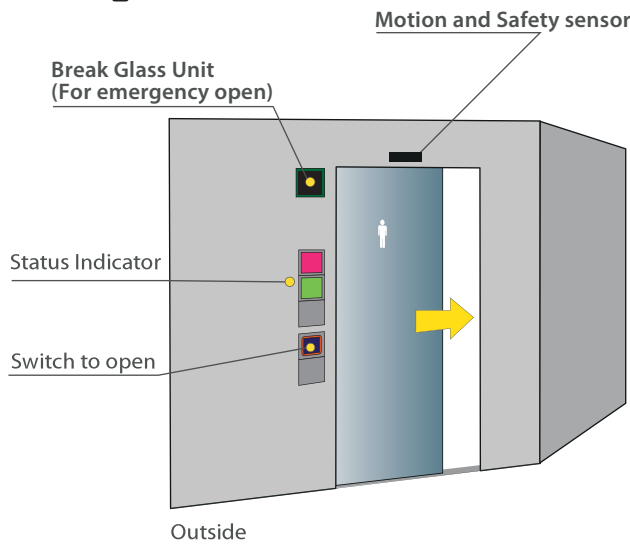


## Content

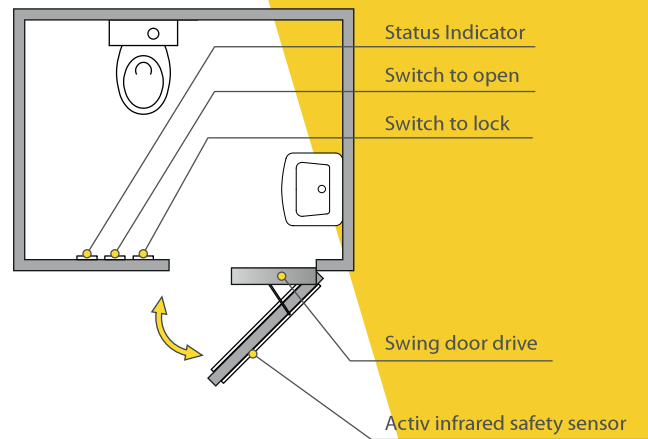
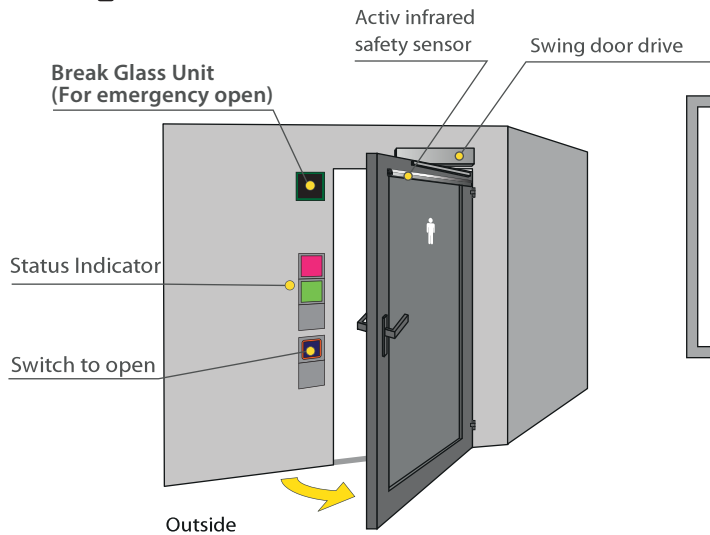
- 02 --- Basic Applications
- 03 --- Barrier Free Regulation & BFA2008 Manual and Amendments
- 04 --- Typical Operational Procedure
- 05-06 --- Customized & Integrated Control Panels
- 07-12 --- Job Reference
- 13-14 --- Portfolio of Equipment

# Basic Applications

## Sliding Door



## Swing Door



## About Signage

Signs should be **clear and easy to read and understand** in order to assist persons with intellectual, cognitive and sensory disabilities.

**International symbols** are to be used for purpose of **standardization** and apprehension by all persons with a disability residing in Hong Kong or visiting from overseas.

Examples of standard public information symbols:

- Prominent signs with **high color and lumious contrasts** as well as special shapes are recommended to be used for the elderly.
- To account for persons with visual impairment, **larger fonts and braille, more prominent** and well-defined shapes of signs are recommended.

### 自動趟門 Automatic sliding door



請在門關上後，按擊鎖門  
Press to lock door after door is fully closed



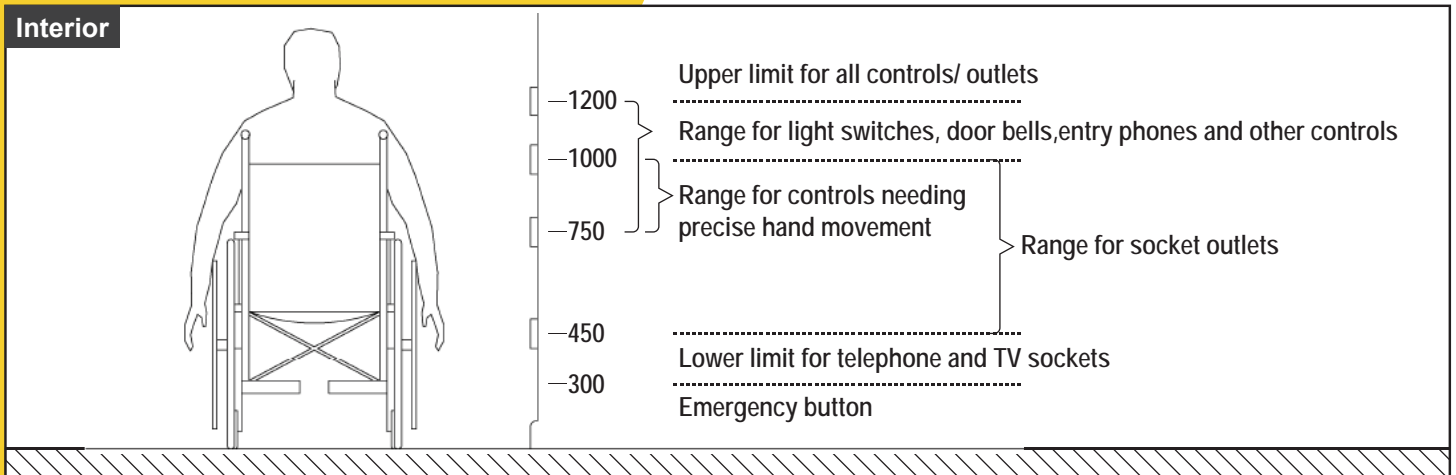
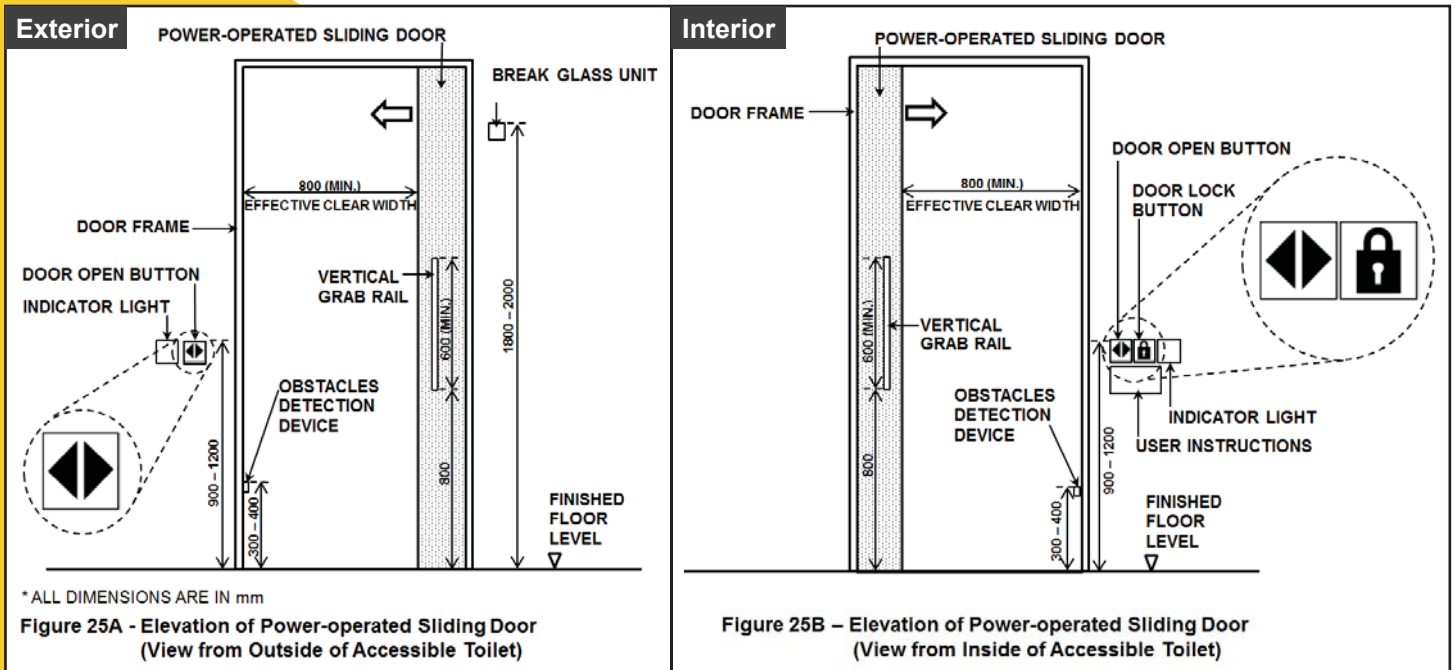
按擊解鎖，門會自動開啟  
Press to unlock and door will automatically open



緊急召援按鈕設於座廁旁  
Emergency call button located near toilet

# Barrier Free Regulation & BFA2008 Manual and Amendments

## About Button and Component Location



Automatic sliding door with **overhead sensor** or manual **large control button** should be provided. A push button should be easily operated and be provided in any individual accessible toilet compartment or a water closet cubicle designed for the persons with a disability to summon assistance at seated position or on the floor when the person has fallen accidentally. The call button, sometimes equipped with a pull cord of a length between 700mm to 750mm should be suitably positioned and reachable not more than 300mm from floor level.



### Design Manual



Barrier Free Access 2008

### Amendments



(Oct 2020)



(Apr 2017)



(Nov 2012)



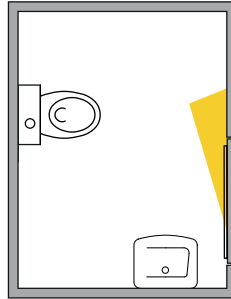
(Jun 2019)



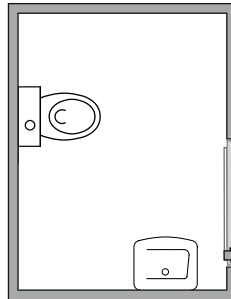
(Sep 2015)

# Typical Operational Procedure

While the toilet is vacant, indicator on the outside is in Green (Vacant)

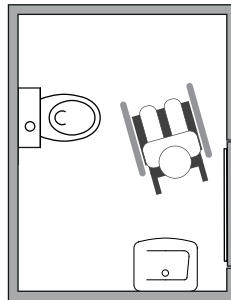


User can press the Open button outside to trigger the automatic operator to open the door

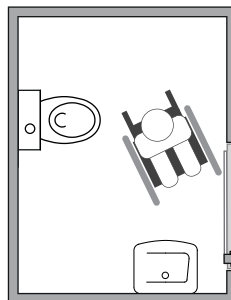


Door will be closed automatically after user entered the toilet,  
or after expiry of the adjusted hold-open time (0-30S)

User press Lock button inside to activate the locking device, indicator outside turns  
Red (Occupied), at the same time indicator inside turns Red (Locked).



User press Open button inside to unlock and open the door to leave the toilet. Indicator  
outside turns Green (Vacant), at the same time indicator inside turns Green (Unlocked)



# Customized & Integrated Control Panels

Materials

Finishes

Wall Side

Colors

Touchless

Function

Design

Programming

BFA Compliance



Door Access Solutions

Finishes

Audio

Control Panel

Language

Touchless

Wall Side

Language

Control Panel

Materials

Finishes

Finishes

Audio

Colors

Control Panel

Materials

# Push Button Series (Need to touch)

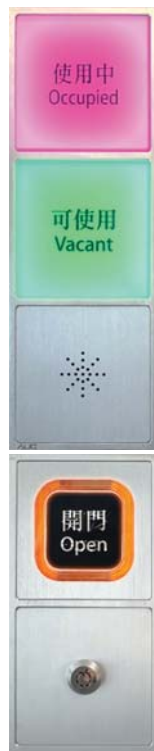
Exterior



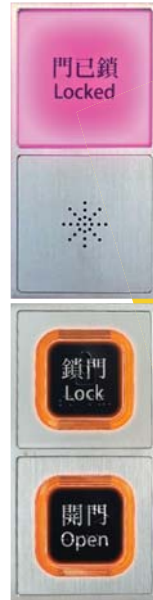
Interior



Exterior



Interior



Exterior



Interior



## AUB Standard Ver. BOM-1000

AUB Integrated BFA 3-in-1 Indicator Panel for Automatic Door System (Disable Toilet, Push Button with Braille)

## MTRC Ver. BOM-1004

AUB Integrated BFA Indicator Panel Automatic Door System for MTRC (Disable Toilet, Push Button with Braille & Audio)

## Custom Ver. MM-26401 / MM-26402

AUB Integrated BFA 3-in-1 Indicator Panel for Automatic Door System (Disable Toilet, User Guide & Push Button with Braille & Audio)

# Touchless Switch Series (Wave only - no need to touch)

Exterior



Interior



Exterior



Interior



Exterior



Interior



## AUB Standard Ver. BOM-1001

AUB Integrated BFA 3-in-1 Indicator Panel for Automatic Door System (Disable Toilet, Magic Switch)

## Custom Ver. BOM-1008

AUB Integrated BFA 3-in-1 Indicator Panel for Automatic Door System (Disable Toilet, Magic Switch & Audio) Accessories Only

## Custom Ver. MM-27526

AUB Integrated BFA 3-in-1 Indicator Panel for Automatic Door System (Baby Care Room, Card Reader & Magic Switch)

# Job Reference

## Hong Kong International Airport





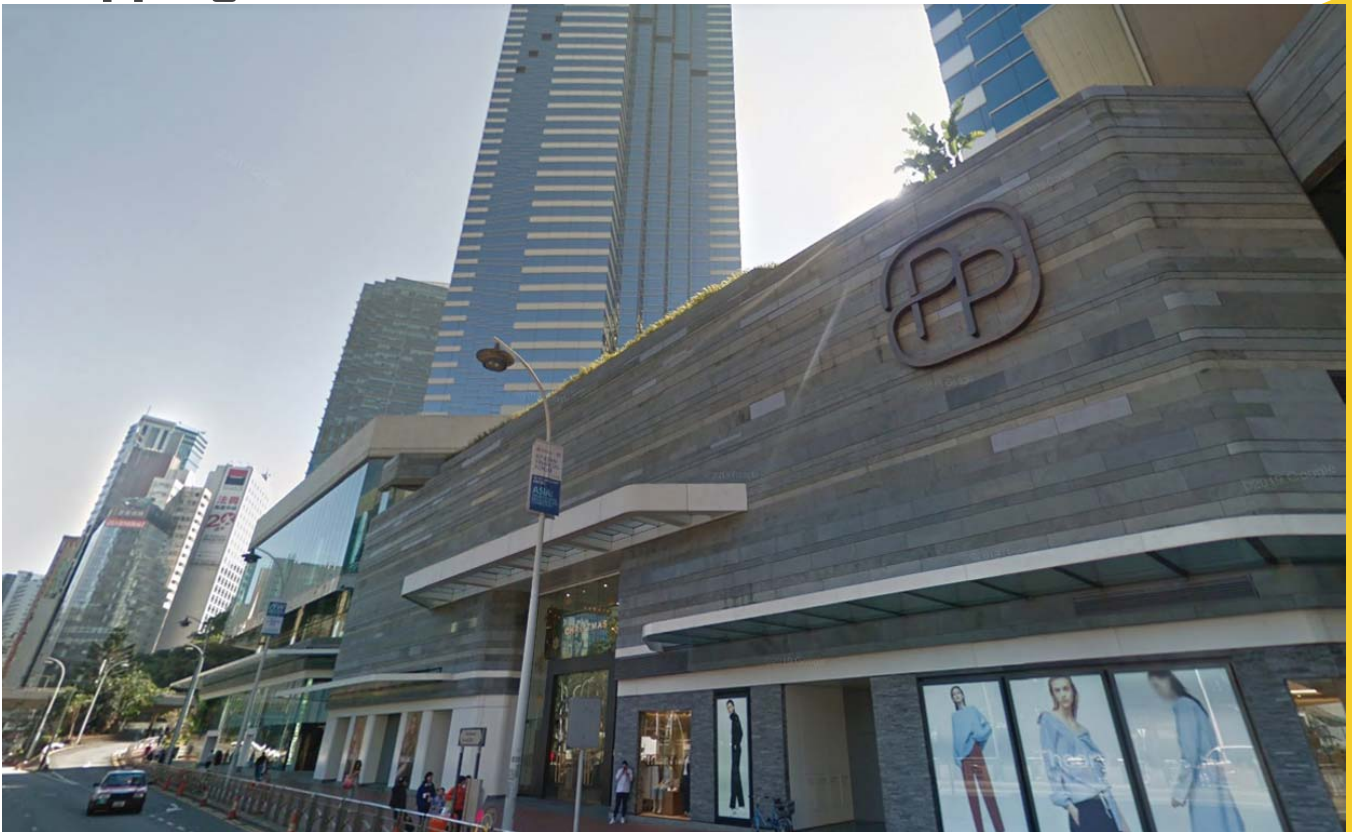
# MTR Station



# Hospital



# Shopping Mall



Vacant



Occupied



# Commercial - Executive Toilet (with Access Card)



# Commercial - Public Access



# Portfolio of Equipment

## Drive Units:



Sliding system:



SL Series



Sliding system:



Eterna Series

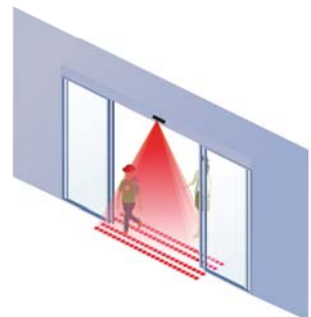
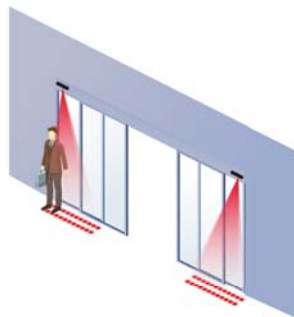
## Sensors:



Swing Door



Sliding Door



FLATSCAN



EYE-TECH



EAGLE



IXIO-S

Swing system:



FD Series

FD20 - Max. leaf weight 250 kg

FD10 - Max. leaf weight 150 kg

Swing system:



Next 75 - Max. leaf weight 75 kg

# Switches & Readers



Push Button

- Braille
- Customized wording/  
language

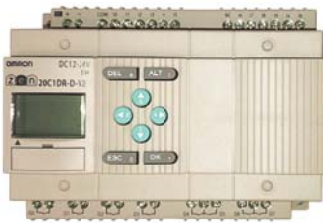


Touchless Switch



Mifare Card reader

# Functional Components



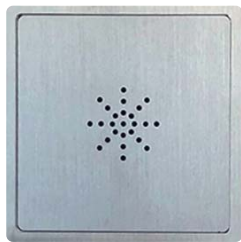
Programmable Logic Controller



Key Selector



Break Glass



Audio



Emergency Handle

# Locks:



Electromagnetic Lock



Electric Dropbolt (Fail Safe)

# Backup (Power Failure):



SL Series Battery Unit



UPS



AUB Limited  
Unit A, 12/F, Hung Mou Industrial Building,  
62 Hung To Road, Kwun Tong,  
Kowloon, Hong Kong  
Tel : +852 2375 6110  
Fax : +852 2406 2602  
Email : [enquiry@aub.com.hk](mailto:enquiry@aub.com.hk)  
[www.aub.com.hk](http://www.aub.com.hk)