

NEW PATENT  
VALID UNTIL 2033

# New Patent for Kaba expertT pluS

New patent application for Kaba expertT pluS, valid until 2033

Kaba stands for reliability, security, highest quality and sustainability. When the new patent has been granted, the patent protection duration of the Kaba expertT pluS key system will be increased for a further 20 years until 2033.

The new coding on the key tip cannot be produced with conventional key milling machines. If the code is not present the key can be neither inserted nor turned. New shapes of the tumbler pins let the key glide even more smoothly into the keyway. Keys are only available from Kaba or from authorized dealers. Duplicate keys or additional cylinders to a keying or master key system are only available against presentation of legitimation, e.g. the security card, which is provided with each Kaba security cylinder.

Silca is the preferred key milling machines manufacturer for Kaba, as the production of Kaba expertT pluS keys is best supported by Silca.

Reversible key from the inventor  
When Kaba invented the reversible key, for the very first time it did not matter from which side the key was inserted, so or so. Today the reversible key stands not only for user convenience, but also for high permutation capacity and highest security against illegal key copies and opening by manipulation such as picking or bumping.

Certified security  
Kaba expertT pluS holds many international certificates against opening the cylinder by drilling, pulling, picking and bumping. These certificates are available upon request.

The Advantages of Kaba expertT pluS at a Glance

- > PCT-application; Patent valid until 2033
- > Key blanks are not available for retail sale
- > Duplicate keys are only available against legitimation
- > The key can be inserted from both sides and has no sharp edges
- > With keyed alike cylinders or in a master key system the user needs only one single key
- > The standard key clip is available in 12 different colors; the large clip in 7 colors
- > Available in all common cylinder profiles and many special profiles
- > High protection against opening by the bumping method and against drilling
- > With steel reinforcement in the housing with steel shims, high protection against pulling
- > Can be used in electronic access control systems with transponder clip
- > OEM cylinders and custom made cylinders on request
- > Protected key codes for Kaba authorized dealers

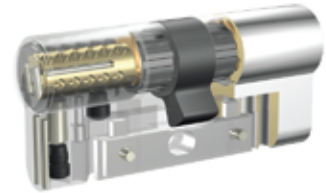
## More than mechanical security



Kaba cylinders live twice as long. With the BAZ3 system the keying of the cylinder can be changed up to two times, without replacing the cylinder itself.



A key is in the cylinder on the inside and you are standing outside the door? No problem for Kaba cylinders with priority or double key override function. Ideal for schools, homes, detention, and many more



You need increased pulling protection, but cannot install security door furniture on the door? The new Kaba VdS cylinder protects against pulling even in steel profile door frames.

### Kaba cylinders can do more than just lock and unlock.

With its special functions, Kaba cylinders can do more than you would think:

- > 3 different thumbturn knob shapes
- > Blind on one side
- > Cylinder with electrical contact
- > Priority (the key unlocks from the outside, if a key is in the cylinder on the inside)
- > Double key override allows opening regardless on which side a key is inserted in the lock cylinder.
- > Emergency key (for rescue services)
- > Construction time changes the keying with replacing the lock cylinder
- > Freewheel cam for emergency and gear operated locks
- > Cam with relative movement
- > Cogwheel cam with up to 18 teeth
- > Full steel housing against pulling and snapping
- > Housing with steel shim reinforcement against pulling

### Kaba Modular

The Kaba Modular System lets cylinders be rebuilt on site to other lengths or even other cylinder types with little effort. The keying remains unchanged.

### Keys

Kaba reversible keys are made of nickel sliver and are extremely wear resistant. They are available in 4 types.

For regular use:

- > SmartKey clip in 12 colors
- > SmartKey clip with RFID transponder for electronic access systems

For use with security rosettes and multiple-point locks

- > LargeKey clip in 7 colors
- > Armor bow (without clip) also for customer coinage

### Cylinder types:

- > Double-, single- and thumbturn cylinders in Europrofile, Swiss round profile, Scandinavian and Union oval profiles, French round profiles
- > Outside and inside cylinders for surface mounted locks
- > Furniture cylinders
- > Furniture locks
- > Camlock cylinders
- > Key switch cylinders
- > Elevator control cylinders
- > Padlocks
- > Window handles and olives
- > Key deposit tubes
- > Key storage cabinets

### High permutation capacity

4 radially arranged pin rows with up to 22 tumbler pin pairs on up to 44 possible positions yield over 907 billion pos-

sible keyings. Medium-large sized master key systems can be realized.

### Custom locks

The compact dimensions of the insert allows it be built into all kinds of locking devices and is ideal for use in OEM applications. Send us your locking device, we will construct a fitting Kaba lock for it.

### International Certificates for double-, single- and thumbturn cylinders in Europrofile

- > EN 1303  
Key Related Security Grade 6
- > EN 1303  
Attack Resistance Grade 2 when used with security door furniture or with optional steel reinforcement shims
- > DIN18252 Grade 82
- > VdS B, BZ and master key systems
- > FZG Cylinders with freewheel cam function in gear operated (emergency)locks
- > GOST (Russia)
- > Kitemark (UK)

### Investment security

The modular construction and the possibility, to extend master key systems and to retrofit mechanical keys with RFID transponders, guarantee flexibility and secure your investment for years ahead.

# Kaba ExperT keying combinations



## Keying Combinations

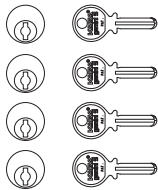
The master keying capability of Kaba cylinders is much greater than comparable systems. Kaba cylinders incorporate a greater number of pins and a method of arrangement that maximises the available keying combinations. **The theoretical number of different keys is 269,684,519,731,200.** All Kaba locks are keyed to differ unless special keying is requested



## Types of combinations

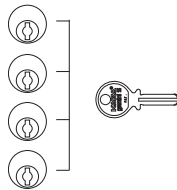
### Keyed to Differ

Each lock can only be opened by its own individual key.



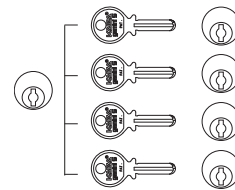
### Keyed Alike

Allows for a number of locks to be opened by the same key. There is no limit to the number of locks that can be keyed alike.



### Maison Keyed System

Often used in apartments. Each apartment has its own key which will not operate the doors to another apartment but will operate the locks to communal doors.



## Temporary Construction Keying

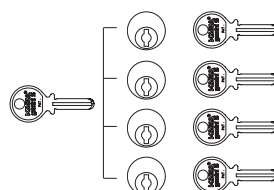
Locks are keyed alike for the builders convenience and security for the owners. When the building is completed the construction cylinders are removed and final cylinders installed.

## What is a Master Key Systems

A master key system is defined as a quantity of locking cylinders grouped in a certain combination technology, whose keys have the additional function of carrying a planned order function along with the mechanical locking function.

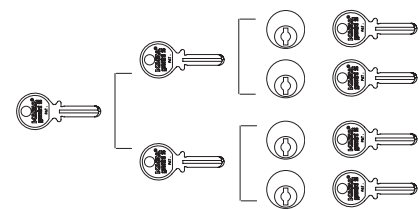
## Master Key Systems (MKS)

Each lock has its own individual key which will operate no other lock in the system. There is a master key which will operate all locks in the system.



## Grand Master Key Systems (GMKS)

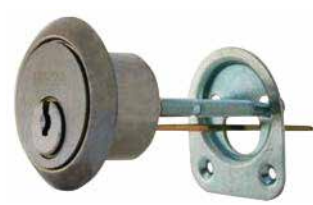
Each lock has an individual key and the locks are divided into two or more groups. Each group of locks is operated by one Master Key with an overall Grand Master Key.



# Kaba expert Cylinder Product Range



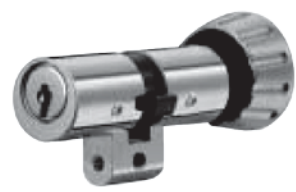
**Euro-profile cylinder**



**Rim cylinder**



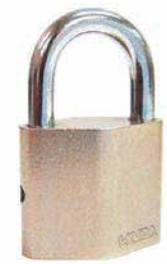
**Key Switch**



**Swiss-profile cylinder**



**Furniture Lock**



**Padlock**



**Oval-profile cylinder**



**Cabinet Lock**



**Screw-in cylinder**



**Cam Lock**

### Surface finishes

Nickel plated	NI
Standard/natural brass	MS
Standard antique brass	MSA
Polished brass	MP
Chemically nickel-plated	NIC
Standard Chrome	CR
Polished Chrome	CRP
Dull Chrome	CRM
Light brown	BH
Medium brown	BM
Dark brown/black	BD
Gold plated	GO



AUB Limited  
 Unit A, 12/F., Hung Mou Industrial Building,  
 62 Hung To Road, Kwun Tong,  
 Kowloon, Hong Kong

Tel. : +852 2375 6110  
 Fax : +852 2406 2602  
 Email : enquiry@aub.com.hk  
 www.aub.com.hk