



INTELLIGENT LOCKING SYSTEMS



Locking Systems  
for Lockers



AUB Limited - Door Access Solutions for Commercial, Institutional and Residential projects in Hong Kong and Macau.

We are offering a wide portfolio of Products & Solutions including Automatic Doors, Windows & Entrance, Hardware & Interior Doors, Security Gates, Access Control and Industrial Doors.

Service is our Value - we provide Technical Advice & Customized Drawings, Ironmongery Schedules, Master Key Plans, Supply & Installation, Contracting, Training and Service & Maintenance programs and Sourcing.

Key partners and suppliers include GILGEN Automatic Doors, AIR-LUX Window Systems, DORMAKABA Security Solutions, EFAFLEX High-Speed Doors, HART Security Shutters and TBS Biometric Solutions and many more.

Our experienced team with its in-depth market knowledge, product know-how and business experience is driving AUB Ltd to become a leading brand in the Industry.



Manage and Book your locker anytime, anywhere.

OTA aims to provide a simple and user-friendly UI and dashboard design to guide users to check booking status and complete a booking request. The process flow can be tailor made to particular requirements.



#### **User-friendly Locking System**

User can book the meeting room and hot desk in just four steps.



#### **Microsoft Outlook Integration**

Integrate with Microsoft Outlook calendar and email notification.



#### **Multiple Check-in Ways**

User can check-in via QR Code, PIN and RFID Card.



#### **Analysis & Reporting**

Provide managers the Detail History, Utilization Report, Absent/ Cancellation Report.



#### **API Ready**

API is ready for further develop and integrate with webpage portal.



#### **Add-on Service**

Allow to book the meeting room with some add-on services.



#### **Support E-ink and LCD Display**

iBooking support types of display, E-ink Displays and LCD Display



## Locking Systems for Lockers

Intelligent Locking Systems Next generation products, designed for all types of public and adaptable to different customer demands. Available in an array of designs, styles, and finishes, our products enhance the convenience of operations for end-users and facility management while safely and simply protecting personal belongings. Main areas of applications include Co-Working and Office areas, Clubhouse, Gym & Spa, Healthcare and Education.

<b>OCS®</b>	-----	<b>3 - 6</b>
<b>PRISMA</b>	-----	<b>7 - 8</b>
<b>NL1® INTEGRA</b>	-----	<b>9 - 10</b>
<b>OTS®</b>	-----	<b>11 - 14</b>
<b>NLX1®</b>	-----	<b>15 - 17</b>
<b>DATA MANAGEMENT</b>	--	<b>18</b>



## OCS® PRO

The OCS Pro is the latest generation of touch keypad lock from Ojmar; now with enhanced features, function and style. The OCS is the preferred solution worldwide for references such as Google, Fitness First, Toyota, Virgin Active to name a few. The latest addition to the family the OCS pro, builds on this heritage and quality making it the obvious choice where design, multiple features and reliability are key.

The OCS Pro is supplied non handed and can be installed as new or retrofit for previous OCS models or locks with similar fixing pattern.



### MAIN FEATURES

**Touch Keypad** - More durable than traditional push button keypads.

**Extended battery life** - Up to 5 years.

**Flexible** - Lock can be switched between free or assigned mode.

**Easy Programming** - By Keypad or EKey + Software(option).\*

**Easy clean** - Hygienic, wipe clean keypad surface.

**Sleek design** - with integrated handle (non handle option available).

**Rated IP 56** - high level resistance to water and dust.

**Finishes** - available in 3 finishes; Silver, Graphite, White.

**Low battery warning** - Low battery indicator.

**Battery override** - External power override for emergency opening.





## OCS® SMART

OJMAR'S NEW OCS SMART, BLUETOOTH® ENABLED LOCKER LOCK ADDS SLEEK DESIGN, ENHANCED FEATURES AND TOUCH FREE CONTROL IN A DEMANDING WORLD

The locker lock is a key part of that experience which management need to easily program, control monitor and maintain for smooth operation and ultimately member satisfaction.



The lock can be operated by the touchpad, or by downloading the Ojmar app which allows the user to lock and unlock the locker with the user's own Smartphone, completely contact-free.

With the OCS Smart, health and Fitness managers have full control of the lock and can set, change or delete features or functions via the keypad or by Bluetooth connection to the lock using a downloadable secure management App.

The Ojmar Smart has a ready to go SDK (Software Development Kit) that can be easily integrated into the Health and Fitness operators APP if required.

---

## OCS® PRO EKEY

---

AN OPTIONAL EKEY CAN BE PROVIDED TO OPEN / CLOSE THE LOCKS AS A MASTER KEY IF REQUIRED OR AS ADA KEY. IT ALSO ADDS A CLONING FEATURE.

Program from one lock can be downloaded to multiple locks saving time on set up and reprogramming multiple locks.



---

## OCS® PRO EKEY + Software

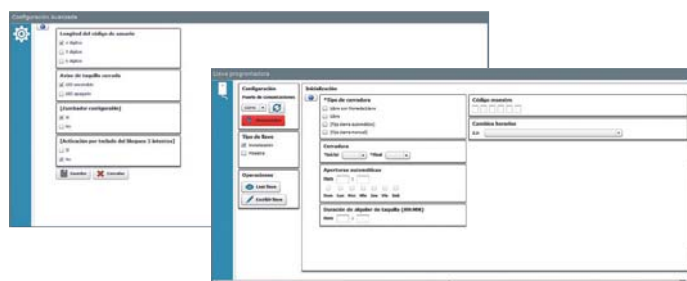
---

OPTIONAL EKEY + SOFTWARE CAN BE SUPPLIED TO QUICKLY ELECTRONICALLY PROGRAM THE LOCKS AND ADDS ADDITIONAL FEATURES AS FOLLOWS:

**Set rental period** – Lock can be set to defined rental period eg 1hour, 8 hours or expiry date (assigned mode).

**Auto open** – Locks can be set to auto open eg at end of day for cleaning or maintenance.

**Audit trial** – A list of last events and uses for different purposes.



---

## OCS® PRO / SMART TECHNICAL SPECIFICATIONS

---

### SPECIFICATIONS

POWER SUPPLY

TEMPERATURE RANGE (FUNCTIONAL)

BATTERY LIFETIME

PROTECTION AGAINST SOLID AND LIQUID BODIES

DIMENSIONS:

4 Alkaline 1'5v AA batteries

- 10 C° to + 42 C°

Up to 5 years (3 years with LED on)

Wet area version: IP56

Front part\_62 x110x10,10

---

## OCS® PRO / SMART PROGRAMMING

---

### KEYPAD PROGRAMMING

THIS IS THE DEFAULT METHOD TO PROGRAM THE LOCKS. VIA THE KEYPAD THE OCS PRO CAN, USING THE MASTERCODE:

Change the mastercode.

Change the User code.

Activate / deactivate sounder.

Activate / deactivate signal LED.

Change User code length: 4,5,6 digits.

Set Free or assigned mode.

Set duration of use (free mode lockers).



OCS PRO / SMART  
Silver



OCS PRO / SMART  
Graphito



OCS PRO / SMART  
White



OCS PRO / SMART  
Silver Handle

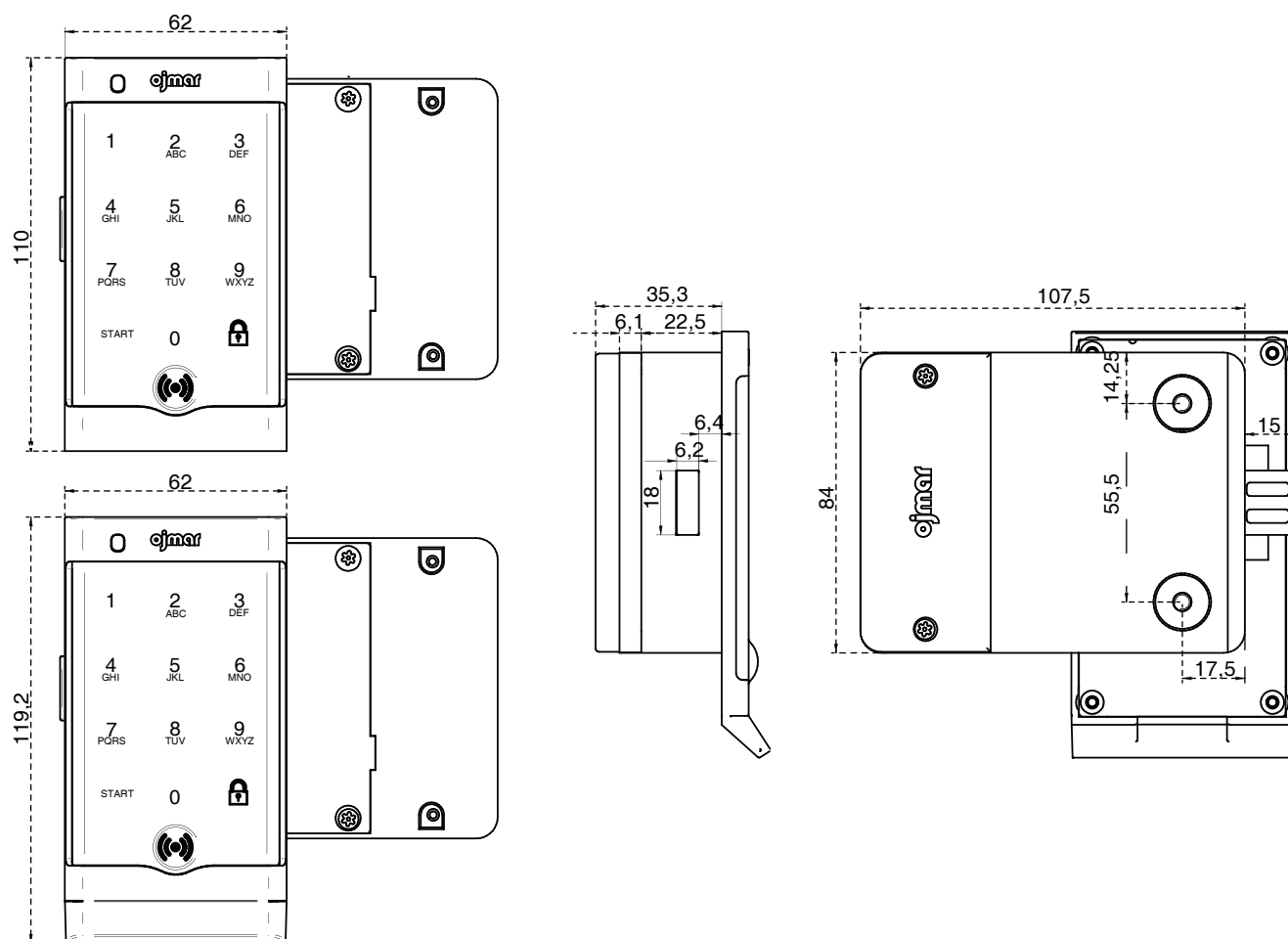


OCS PRO / SMART  
Graphito Handle



OCS PRO / SMART  
White Handle

## OCS® PRO / SMART TECHNICAL DRAWING





## PRISMA

PRISMA THE IDEAL REPLACEMENT FOR MECHANICAL LOCKING SYSTEMS.

Prisma is the ideal entry level electronic lock, allowing facilities to quickly upgrade and secure their lockers, or other storage units, rather than using basic key cams or hasps.

### MAIN FEATURES

**Non Handed** - Unit fits LH or RH doors.

**ADA Compliant** - Standard supply.

**IP 55 Rated** - High level resistance to water and dust.

**CodeSafe** - Prevents unauthorized codes being stored in unlocked position.

**Buttons** - Tactile soft touch with large, high contrast clear digits.

**Simple installation** - Easy key / hasp retrofit or new install.

**Flexible** - Lock can be switched between free or assigned mode.

**Battery override** - External power override for emergency opening.

**LED status indicators** - Shows if a lock is occupied.

**4 levels of code management** - Master, Submaster, User, Service.

**Battery status indicator** - Gives visual battery level.







#### FLASH

More than 80% charged	● ●	● ●	● ●	● ●
Between 50%-80% charged	● ●	● ●	● ●	
Between 20%-50% charged	● ●	● ●		
Less than 20% charged	● ●			

#### NOTE:

Version with mechanical emergency opening available.

## TECHNICAL SPECIFICATIONS

External dimensions	L=148mm, W=33mm
IP Rating	IP55
Batteries	2 x AAA 1.5v 15.000 (Approx 3 years battery life)
Openings	Zamac
Material	Up to 20cm.
Door thickness	Matt black. (other finishes on request)
Finish	Non handed suitable for LH or RH door
Handling	Master & Submaster code: 100,000,000;
Keypad Code combinations	Service code: 1,000,000; User code: 10,000

## PROGRAMMING

The Prisma has four levels of codes available:

#### Level 1 - 8 digit Master code can:

- Open and close the lock
- Change master code
- Set / Change / Delete user and submaster code
- Select private or public function
- Activate / Deactivate service code

#### level 3 - 4 digit User code can:

- Open and close the lock
- Change the submaster code

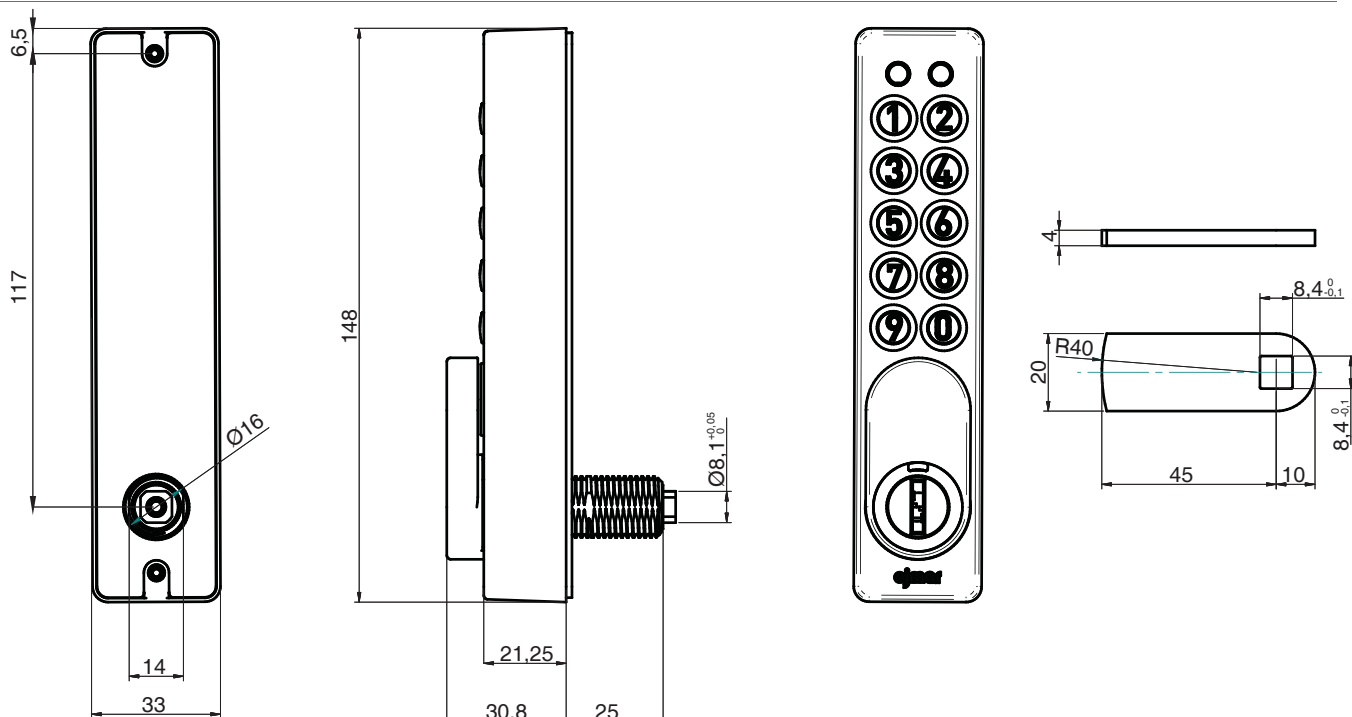
#### level 4 - 6 digit Service Code can:

- Open and close the lock (without deleting user code)

#### level 2 - 8 digit Submaster code can:

- Open and close the lock
- Change the submaster code
- Set / Change / Delete user code

## PRISMA TECHNICAL DRAWING





## NL1<sup>®</sup> INTEGRA

Fully integrated in the locker.  
Automatic and emergency openings.  
Encrypted communications.  
Electronic components, batteries and mechanical locking system are protected inside the lock.  
SDK ready to be integrated with third parties.

TECHNICAL SPECIFICATIONS

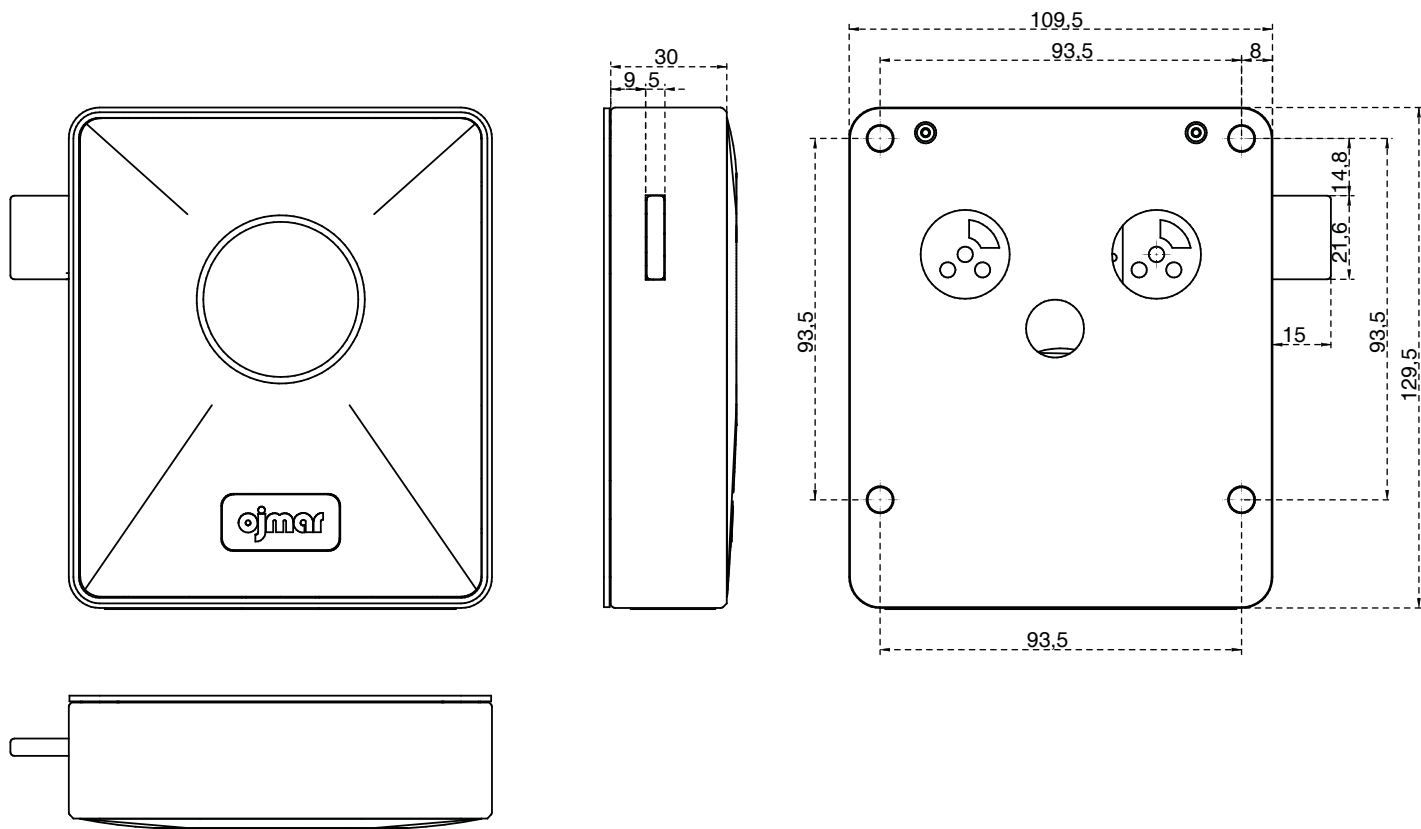
- Authentication method - RFID
- Supported technologies - MIFARE® (Classic1K/4K 4B and 7B UID – ISO/IEC 14443)
- Type of Reading - Sector
- Reading Distance - Up to 20 mm (including door thickness)
- Free Mode - Up to 3 locks simultaneously with a user card
- Fixed Mode (dedicated) - Up to 6 locks with a user card (more than 1 user card per fixed lock)
- Multifunction mode - Up to 3 free locks and 1 fixed lock simultaneously with a user card
- Notifications - Buzzer
- Alarms - Low battery warning (does not allow the locker to be closed)
- Communication standard - NFC
- Type of Encryption - AES 256
- Maximum number of connections - 1
- Batteries (Type and amount) - 4 alkaline batteries VARTA Type AA
- Battery Life - Minimum 2 years (depending on use and configuration)
- Dimensions - 109.5 mm x 129.5 mm x 30 mm
- Weight - 370 g
- Closing resistance - 900 N
- Outer Finish - Satin Grey (RAL7035)
- Temperature - From -10 °C to 42 °C (indoor and non-condensing)
- Protection - IK09

ACCESSORIES

- Ojmar NFC portable programmer
- SW Spherio
- Desktop card reader
- SDK for integrators
- Infoterminal (optional)
- Magnetic door lock (optional)
- Ojmar locking system (optional)
- Outer sticker (optional)

OTHER DATA

Door Material	Phenolic Glass HPL laminate Melanin
Door Thickness	< 20 mm
Availability	Right / Left



# OTS®BASIC

Programmable in free mode, the BASIC OTS is a safe bet for facilities that require simple and direct locker management. Stand alone or as part of an access control system, the OTS transponder is a secure choice.

Users can open or close lockers by simply pressing a proximity media: card, bracelet or Wellness® key against the door knob.



**OTS BASIC Front**



**OTS BASIC Back**

## MAIN FEATURES

- Power supply 4 AA 1.5V batteries.
- Battery life: 30,000 cycles.
- Detection of low battery.
- Technology Mifare 1k, 4k.
- Temperature range: -20°C / 70°C.
- Protection against solid and liquid bodies: IP55.
- Protection against external impact: IK7.
- Protection against internal impact: IK9.
- Display without LED.
- Dimensions; 109,5 x 35 x 118 mm.

## OTS® ADVANCE

Our RFID locker locks will complement perfectly any access or management system implemented in a facility. It is the technological alternative to mechanical locks.

Its operation using a proximity device whether it is a key, a wristband or the Wellness® key is really easy.



**OTS ADVANCE Front**



**OTS ADVANCE Back**

### MAIN FEATURES

- Power supply 4 AA 1.5V batteries.
- Battery life: 30,000 cycles.
- Low battery detection: stand alone via NFC programmer or integrated into an access control system.
- Communication interface: NFC
- Temperature range: -20°C / 70°C.
- Protection against solid and liquid bodies: IP55.
- Protection against external impact: IK7.
- Protection against internal impact: IK9.
- Display: LED red, green, orange.
- Dimensions: 109,5 x 35 x 118 mm.





## OTS® BASIC INFOTERMINAL •))

The Infoterminal is an information point for users who forget their locker number or wish to consult their remaining credit balance, etc.

If an OTS transponder media is held up to the reading area, the infoterminal will display the number of the occupied locker on screen.



## OTS® BASIC PROGRAMMER •))

The programmer is a read & write unit designed to read from and write to transponder cards and bracelets.

Although normally installed in reception and linked to a PC via an RS232 interface, it can also function as a portable programmer for connecting to locks (for the purpose of testing, firmware updates and other events).



## OTS® ADVANCE NEXO®NI1 INFOTERMINAL

The programmer is a read & write unit designed to read from and write to transponder cards and bracelets.

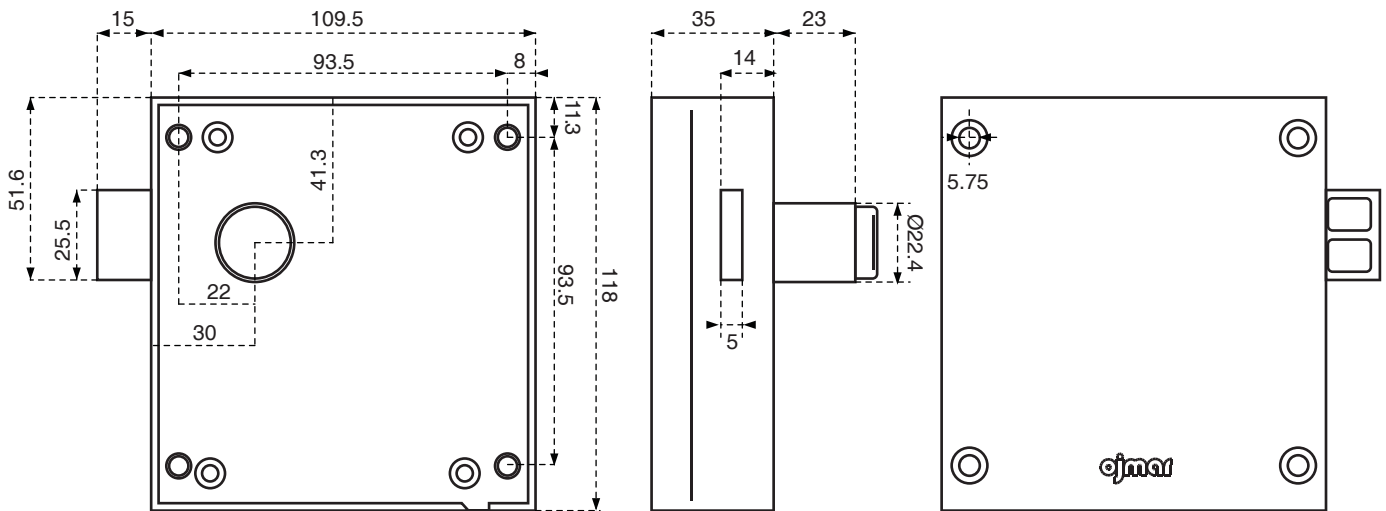
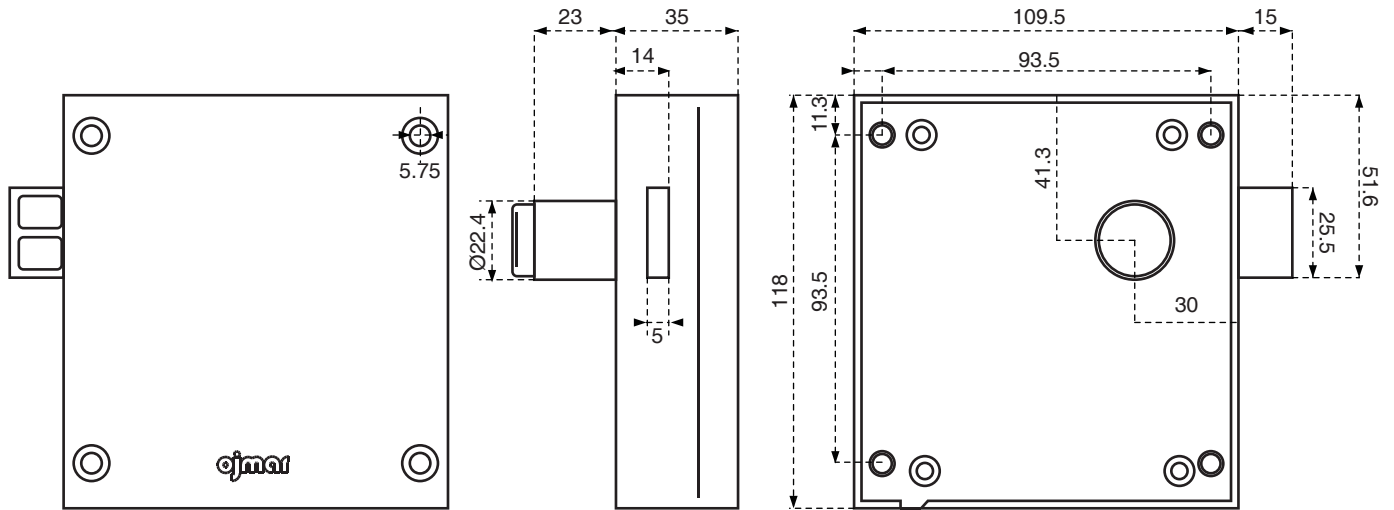
Although normally installed in reception and linked to a PC via an RS232 interface, it can also function as a portable programmer for connecting to locks (for the purpose of testing, firmware updates and other events).



## OTS® ADVANCE NEXO®NP1 PROGRAMMER

The Infoterminal is an information point for users who forget their locker number or wish to consult their remaining credit balance, etc.

If an OTS transponder media is held up to the reading area, the infoterminal will display the number of the occupied locker on screen.



## NLX1®

NEXO®NLX1 is designed for quick and easy installation, avoiding complex and costly hardwiring. Additionally, its dimensions and footprint allow for direct replacement of most mechanical and electronic systems on the market.

NEXO®NLX1 has been designed to operate in an uninterrupted manner. In the event of a network outage or power failure the lock passes to off-line mode and continues to collect data, which will be sent to the system once the network is restored. The user is not affected, and does not lose data or information.

A LED light indicates locker availability. In the event of a locker not closing securely, the system will alert the user acoustically and visually.



**ojmar**



### REAL-TIME WIRELESS LOCKING SYSTEM

Wi-Fi enabled. On-line locker lock without cables.

### PEACE OF MIND

System works as stand-alone if the Wi-Fi network goes down.

### MULTI DEVICE MONITORING

Locker Occupancy Monitoring on PCs, tablets (Windows and Mac OS) and mobile devices (Android and iOS).

### REAL-TIME SYSTEM REPORTS

Usage, Hardware Status and Battery Level. Alarm Notification; faulty closure, vandalism or attempted break-in. Safe and secure.

### ONLINE USAGE PERMISSION MANAGEMENT

Quick, easy and effective.

### OFFLINE LOCK CONFIGURATION

In case of network or power failures.

### DATA MANAGEMENT

Locker use and areas to optimize space and investment. The data it provides allows you to know your facility better, and makes for the efficient planning of future centers.

### RFID COMMUNICATION

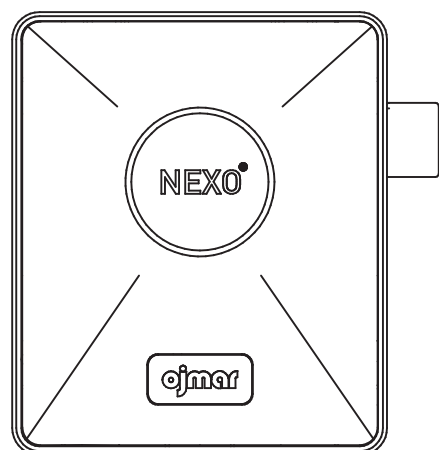
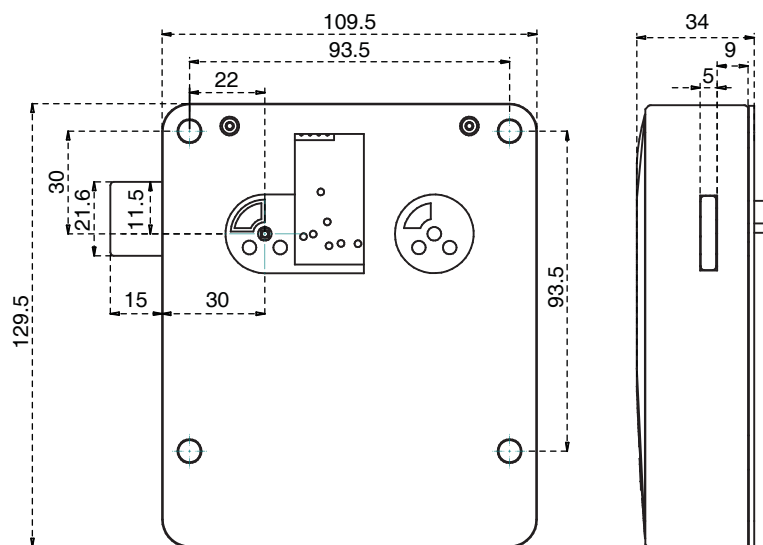
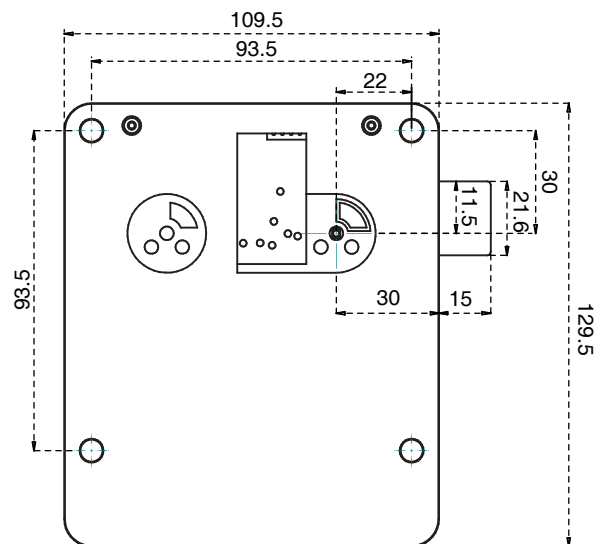
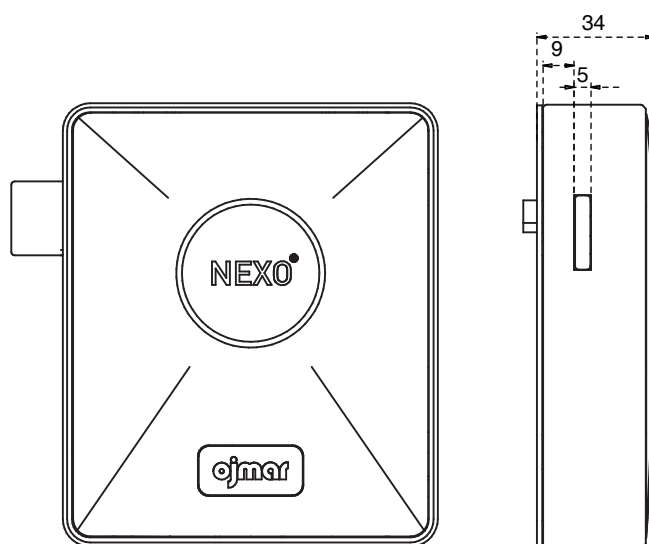
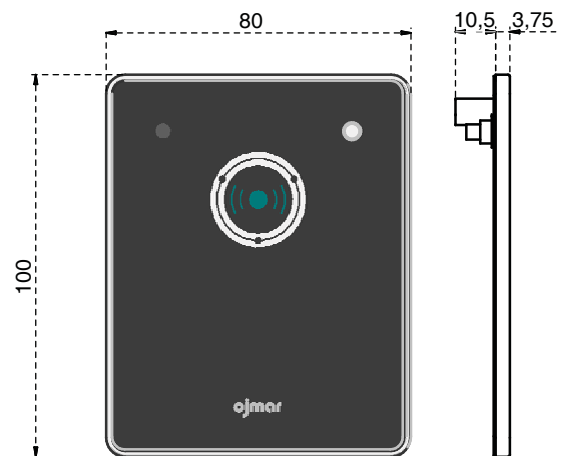
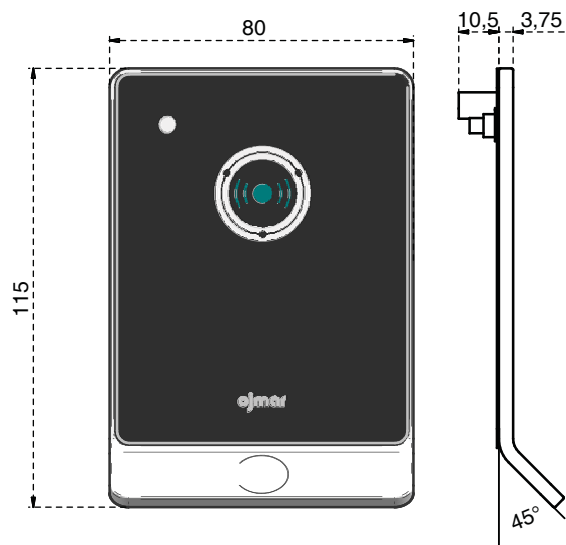
RFID communication with proximity media.

### NFC COMMUNICATION

NFC communication with handheld terminal for programming locks.

TECHNOLOGY	Mifare Classic
ONLINE AND DISCONNECTED OPERATION	WLAN WiFi 802.11 b/g .
RFID COMMUNICATION	13.56 MHz Frequency / ISO 14443.
POWER SUPPLY	4 batteries 1.5v AA Alkaline
TEMPERATURE RANGE	-10 °C to +50 °C
CORROSION RESISTANT	UNE-EN 600068-2 11:2000 (96 hours)
ENVIRONMENTAL TEST	EN 60068-2-1, EN60068-2-2, EN 60068-2-78
PROTECTION CLASS	IP65

NLS1 TECHNICAL DRAWING

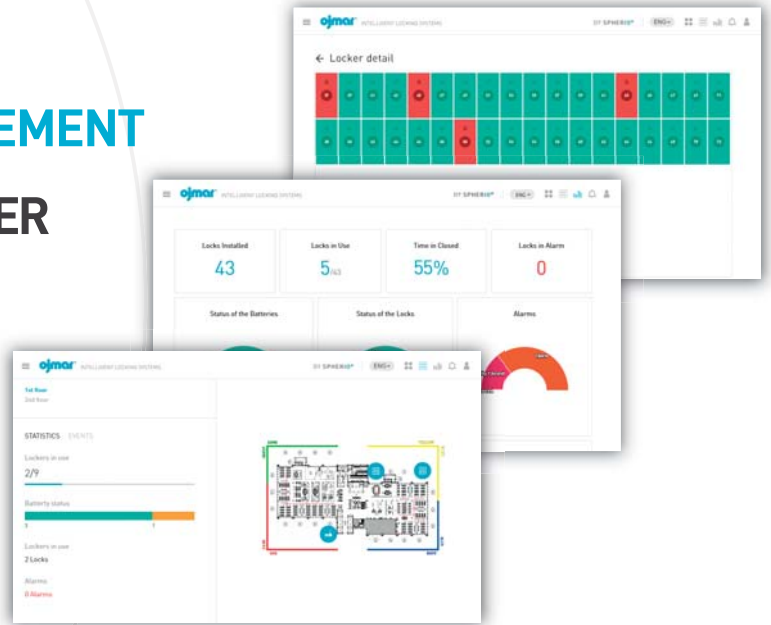






## DATA MANAGEMENT

## REMOTE LOCKER MANAGEMENT



### REAL TIME MULTI-DEVICE MONITORING.

The system allows monitoring the locker installation in real time from any authorised PC, Tablet or Smartphone, allowing flexible remote management.

### SMART MAINTENANCE.

Continuous battery level and lock status monitoring to ensure pro-active maintenance and operation of the locks.

### USER EXPERIENCE.

The user will know locker availability and allocation with confidence. The real time information provided by NEXO®-NLX1 allows providing a first-rate service.

## NLX1® and SPHERIO® INTELLIGENT DUO

### INTUITIVE SOFTWARE THAT WILL ALLOW YOU TO DO MORE IN LESS TIME.



### EASY AND INTUITIVE WEB INTERFACE.

Operators can monitor and change settings such as:

- + Add new users.
- + Make locker reservations.
- + View locker use reports/audit.
- + Manage and review occupancy.
- + Review the status of alarms, etc.



### SPHERIO® software allows you to programme different locker modes:

#### FREE MODE LOCKER

Available for any user.

#### DEDICATED MODE

For a specific user or period of time.

#### MULTIPLE AUTHORISATIONS

Access to lockers by zone and in different buildings.

#### PROGRAMMED OPENINGS

The built-in clock function allows for:

- + Access by users during specific set time zones.
- + Auto unlock of lockers at set times.



AUB Limited  
Unit A, 12/F, Hung Mou Industrial Building,  
62 Hung To Road, Kwun Tong,  
Kowloon, Hong Kong  
Tel : +852 2375 6110  
Fax : +852 2406 2602  
Email : [enquiry@aub.com.hk](mailto:enquiry@aub.com.hk)  
[www.aub.com.hk](http://www.aub.com.hk)